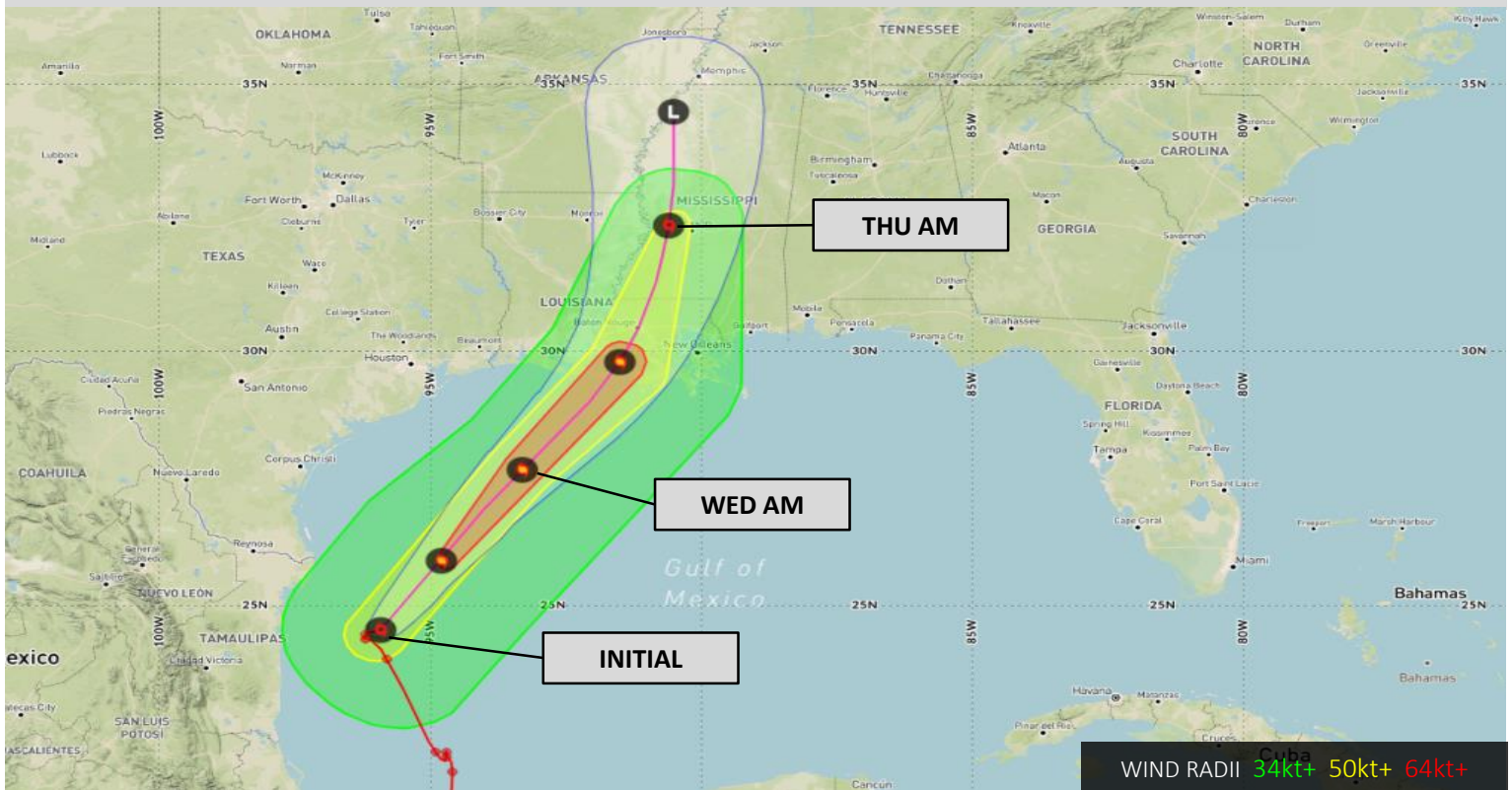


Tropical Storm Francine Advisory #14

Effective: September 10, 2024 1000 CDT

Storm Center	24.5N 95.9W (Approximately 100NM SE of Brownsville, Texas)			
Current Movement	North at 4 knots.			
Sustained Winds/Gusts	55 knots / 65 knots			
34kt Wind Radii	50 NE	120 SE	100 SW	100 NW
50kt Wind Radii	20 NE	30 SE	40 SW	30 NW
64kt Wind Radii	0 NE	0 SE	0 SW	0 NW
Forecast Trend	Tropical Storm Francine is expected to become a hurricane today. Seas are expected to rise rapidly near the center of the system with the intensification.			

FORECAST TRACK



Forecast Positions and Max Winds

Track Forecast Confidence: High				Intensity Forecast Confidence: Moderate				
Storm Center Time/Date (CDT)		UTC Time	Position		Sustained Winds		Motion	Category*
+0 hr	Tue, Sep 10 1000	1500	24.5N	95.9W	55 KT	65 MPH	N 4 KT	TS
+12 hr	Tue, Sep 10 1900	0000	25.9N	94.8W	65 KT	75 MPH	NE 11 KT	CAT 1
+24 hr	Wed, Sep 11 0700	1200	27.7N	93.3W	80 KT	90 MPH	NE 13 KT	CAT 1
+36 hr	Wed, Sep 11 1900	0000	29.8N	91.5W	85 KT	100 MPH	NNE 14 KT	CAT 2
+48 hr	Thu, Sep 12 0700	1200	32.4N	90.6W	50 KT	60 MPH	N 11 KT	TS
+60 hr	Thu, Sep 12 1900	0000	34.5N	90.5W	30 KT	35 MPH	N 11 KT	DISSIPATED
+72 hr	--	--	--	--	--	--	--	--
+96 hr	--	--	--	--	--	--	--	--
+120 hr	--	--	--	--	--	--	--	--
+144 hr	--	--	--	--	--	--	--	--
+168 hr	--	--	--	--	--	--	--	--

Changes from Previous Advisory

No significant updates.

Marine Weather Impacts

Winds: Gales force winds wrap around the entire system. Francine will remain rather compact with the gale force winds and elevated conditions remaining roughly 100-120NM in all directions. Hurricane force winds will develop within 30-50NM of the center of the system today.

Seas: Rough seas nearly extend to the TX/LA coastline and do extend to the TX/Mexico coastline. To the south and east, rough seas extend 150-200NM out. Very rough seas have developed within the closest 50NM and high seas to potentially very high seas will develop near the center of the system throughout the day today and tomorrow. Current maximum significant wave height is set at 4.5m (15ft).

Onshore Impacts

TX/Mexico Coast: Heavy rainfall and gale force winds will continue to impact the coastline today. The strongest thunderstorms will remain offshore, however, 50-100mm (2-4in) of total rainfall is expected with isolated amounts up to 150 mm (6 in) possible. The strongest winds remain on the western side of the system impacting the coastline.

TX/LA Gulf Coast: Landfall is expected in western LA Wednesday afternoon. The system will remain fairly compact with gale force winds remaining within 100-120NM of the center of the system. Gale force winds are expected across much of the coast, with hurricane force winds near the center. This will lead to the highest storm surge (5-10ft) in the Vermilion Bay area. 100-150mm (4-6in) of rain will be common with areas near the center receiving 200-300mm (8-12in).

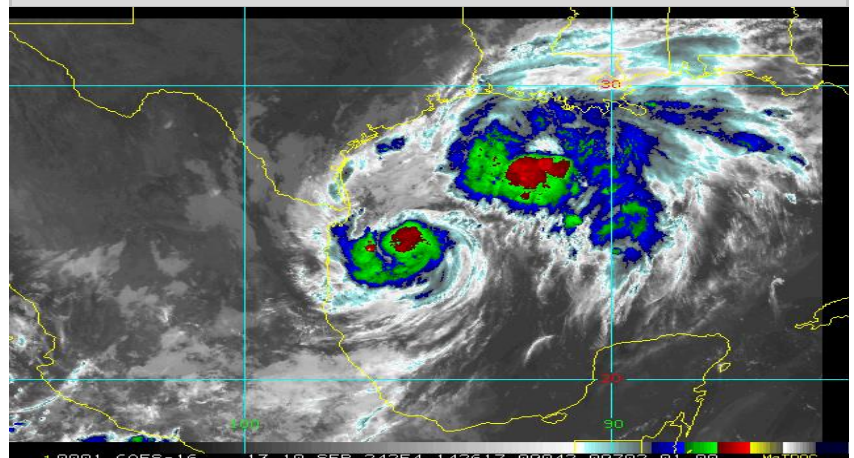
Forecast Discussion


Observational Perspective: Overnight the majority of the convection to the northeast was scoured away by the wind shear. Spiral rainbands are still evident and wrapping from the Gulf coastline down and around to the southern side of the system. Francine remains in favorable conditions and the structure and intensity are expected to improve throughout the day. Current maximum sustained winds have been observed at 55kt (65mph).

Intensity Forecast: Warm seas and abundant tropical moisture are expected to persist and fuel the ongoing development. Wind shear remains low-moderate, but is already impacting the strength of the system. The favorable conditions are expected to outweigh the wind shear and strengthening into a Category 2 hurricane remains expected. Rapid intensification remains possible, but 85kt remains the expected peak intensity of the system. Beyond 24-36 hours, vertical wind shear is expected to rapidly increase right up until landfall which will halt any strengthening. Confidence remains moderate for the intensity due to the uncertainty related to the potential rapid intensification.

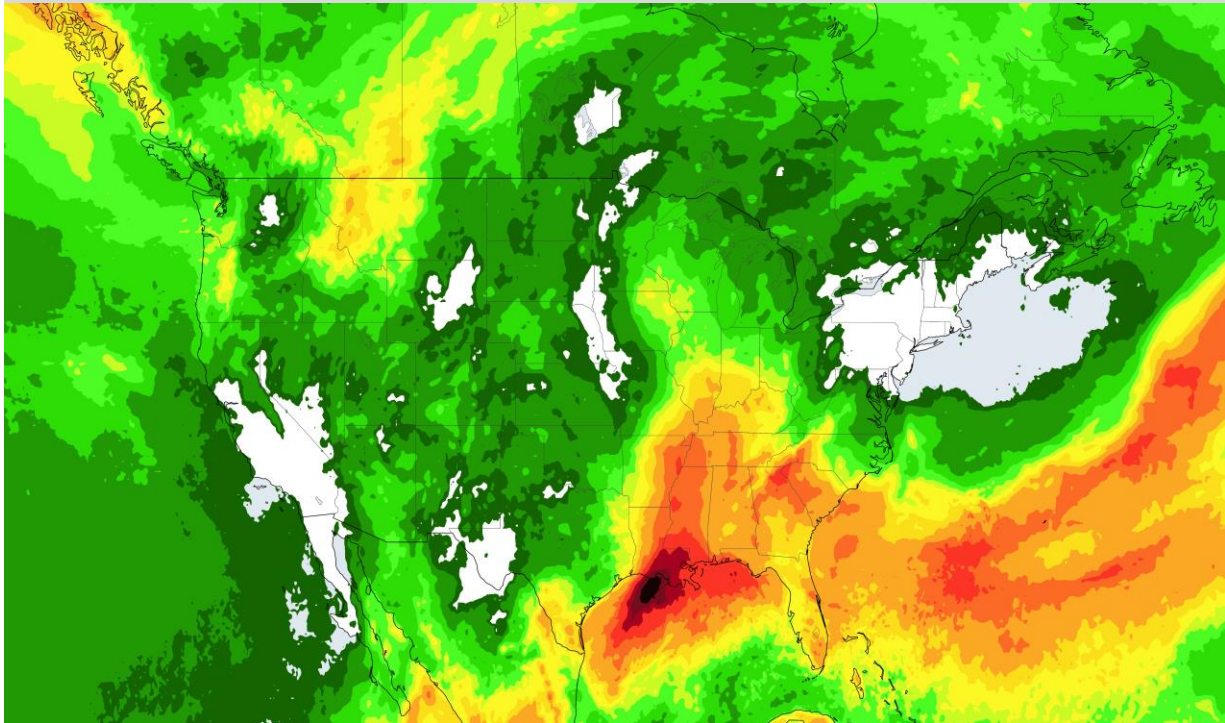
Track Forecast: The high pressure over Cuba remains stationary providing north to northeast flow around its western edge. This is expected to continue to lead to slow motion until the developing shortwave trough over Texas forms and begins to influence Francine. A quick acceleration to the northeast is then expected which will lead to landfall and eventual extra-tropical transition. Confidence remains high in terms of the track.

Infrared Satellite

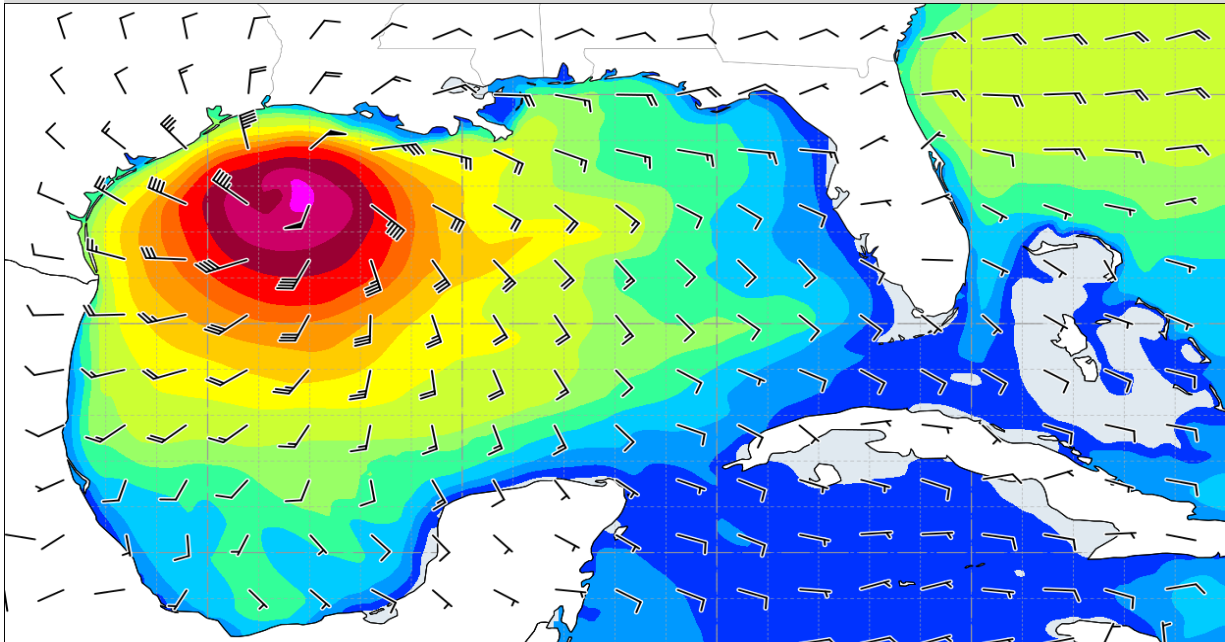


 WeatherOps' next advisory will be issued at 1600 CDT

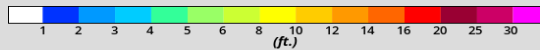
WeatherOps Precipitation Forecast, Sept 10 – Sept 17



WeatherOps Winds and Combined Seas, 1200 UTC Wednesday 11 Sept



Winds and Wave Heights
Valid 12z Wed Sep 11 2024



WeatherOps
powered by DTN

Forecast 34 Knot (39 mph) Wind Radii								
Forecast Positions					Forecast Gale Radii (nm)			
Storm Center Time/Date (CDT)		UTC Time	Position		NE	SE	SW	NW
+0 hr	Tue, Sep 10 1000	1500	24.5N	95.9W	50	120	100	100
+12 hr	Tue, Sep 10 1900	0000	25.9N	94.8W	70	120	100	100
+24 hr	Wed, Sep 11 0700	1200	27.7N	93.3W	90	120	75	75
+36 hr	Wed, Sep 11 1900	0000	29.8N	91.5W	100	120	75	75
+48 hr	Thu, Sep 12 0700	1200	32.4N	90.6W	70	70	55	55
+60 hr	Thu, Sep 12 1900	0000	34.5N	90.5W	0	0	0	0
+72 hr	--	--	--	--	--	--	--	--
+96 hr	--	--	--	--	--	--	--	--
+120 hr	--	--	--	--	--	--	--	--
+144 hr	--	--	--	--	--	--	--	--
+168 hr	--	--	--	--	--	--	--	--